

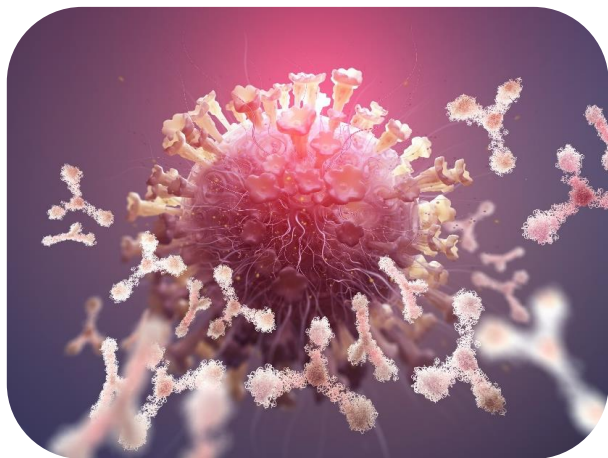
Agilent ProteoAnalyzer System

Parallel to None

Kyle Luttgeharm
Senior Product Manager



Proteins are all around us



Pharma/Biopharma



Research Grade



Industrial

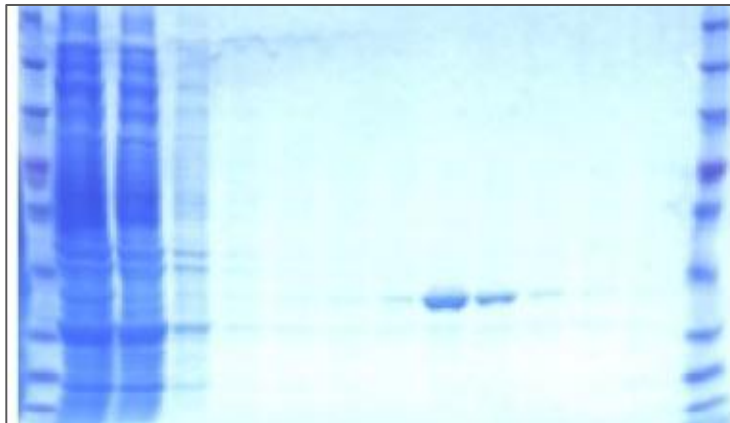


Food/Feed

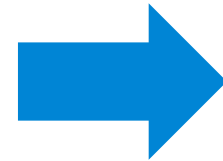
Traditional SDS-PAGE

Manual

Slow



Variable



New

Agilent ProteoAnalyzer System

➤ **Fast**

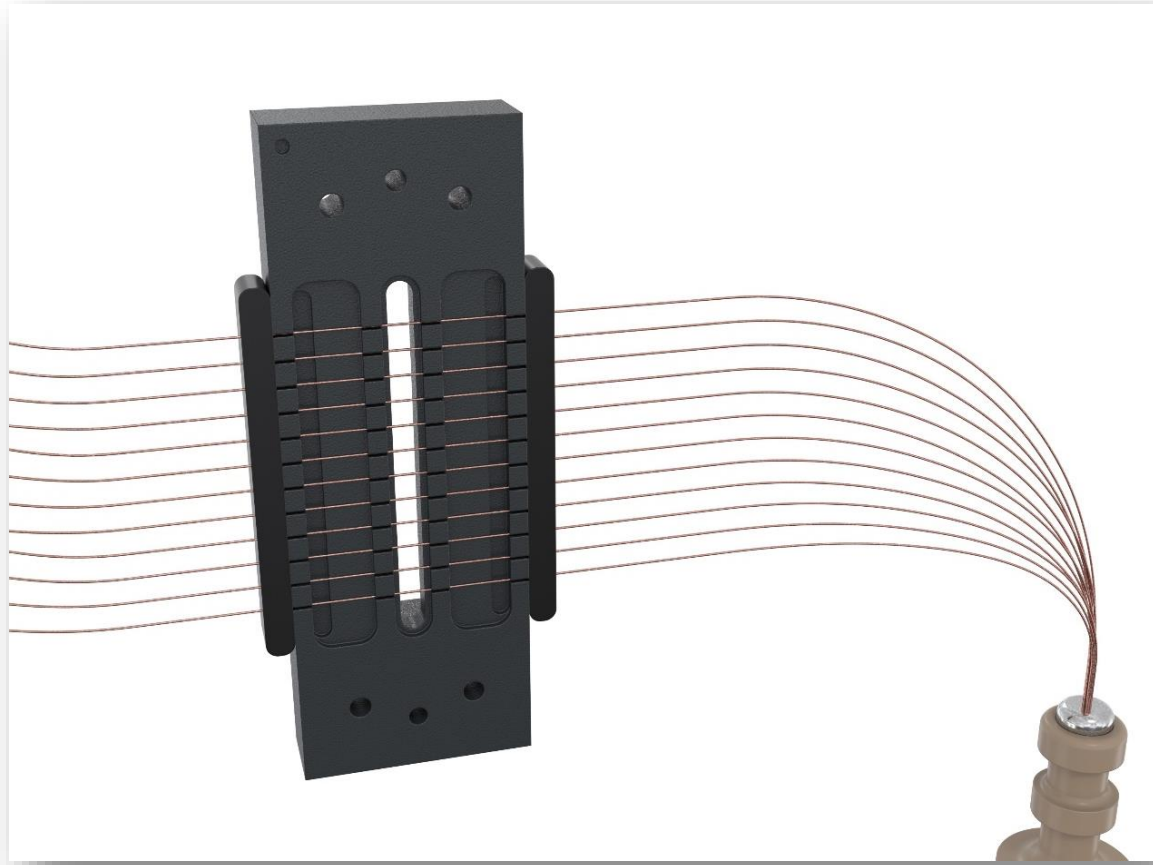
➤ **Efficient**

➤ **Reliable**



➤ Fast

Parallel Capillary Electrophoresis



Streamlined Sample Prep



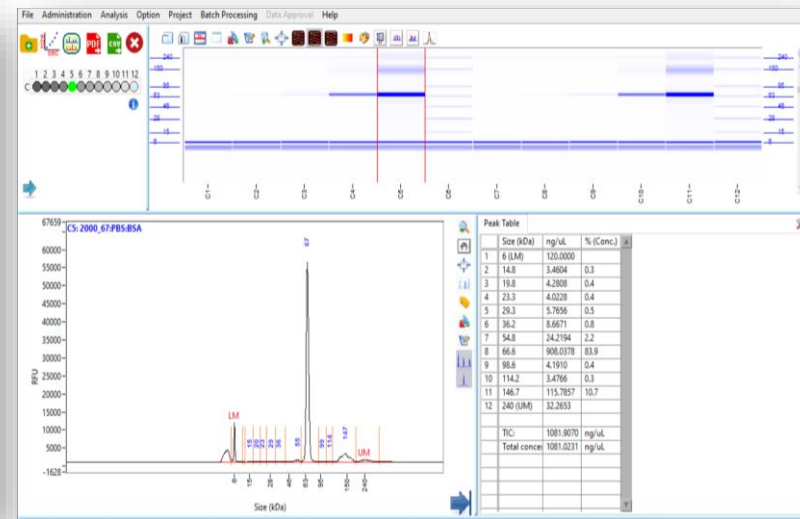
➤ Efficient



Room temperature
stable reagents



Always accessible
sample drawers



Digital Data

➤ Reliable



Agilent ProteoAnalyzer System



➤ **Fast**

➤ **Efficient**

➤ **Reliable**

Currently available in:

- Western Europe
- US/Canada
- Greater China

Available worldwide beginning of Summer 2024